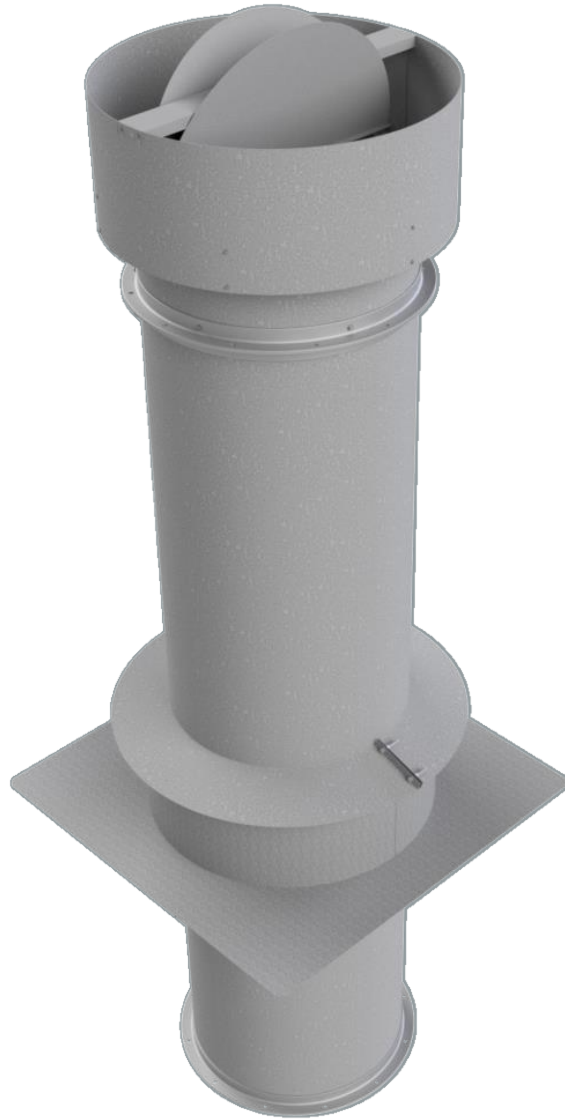




# ROUND DUCTWORK

**COOK MANUFACTURING**



**FULL LINE OF STANDARD DUCTWORK AND ACCESSORIES  
IN STOCK AND READY TO SHIP**

Rev: A

Date: 1/1/2021

Phone: 231-832-3551

Email: [sales@cookmfg.com](mailto:sales@cookmfg.com)

Web: [cookmfg.com](http://cookmfg.com)

Page 1 of 5



# ROUND DUCTWORK

## COOK MANUFACTURING

### STANDARD SIZES:

- Diameters of 12", 18", 24", 30", 34", 36", 42", 48"
- Custom diameters also available

### ROUND DUCT:

- Standard lengths of 24" and 48"
- Manufactured to your exact length free of charge
- Optional access door for easy maintenance

Round Duct (DRP)		
Part No:	Diameter:	Length:
DRP1224	12"	24"
DRP1248	12"	48"
DRP1824	18"	24"
DRP1848	18"	48"
DRP2424	24"	24"
DRP2448	24"	48"
DRP3024	30"	24"
DRP3048	30"	48"
DRP3424	34"	24"
DRP3448	34"	48"
DRP3624	36"	24"
DRP3648	36"	48"
DRP4224	42"	24"
DRP4248	42"	48"
DRP4824	48"	24"
DRP4848	48"	48"



Round Duct with Access Door (DRA)		
Part No:	Diameter:	Length:
DRA1224	12"	24"
DRA1248	12"	48"
DRA1824	18"	24"
DRA1848	18"	48"
DRA2424	24"	24"
DRA2448	24"	48"
DRA3024	30"	24"
DRA3048	30"	48"
DRA3424	34"	24"
DRA3448	34"	48"
DRA3624	36"	24"
DRA3648	36"	48"
DRA4224	42"	24"
DRA4248	42"	48"
DRA4824	48"	24"
DRA4848	48"	48"



# ROUND DUCTWORK

## COOK MANUFACTURING



### MOUNTING FLANGES:

- Made from heavy duty rolled angle iron
- Standard mounting hole pattern

Mounting Flanges (DRF)						
Nominal Diameter:	Part Number:	Inside Diameter:	Outside Diameter:	Depth:	Bolt Circle Diameter:	Hole Qty:
12"	DRF1200	12-3/16"	15-3/16"	1-1/2"	14"	8
18"	DRF1800	18-3/16"	21-3/16"	1-1/2"	20"	8
24"	DRF2400	24-3/16"	27-3/16"	1-1/2"	25-7/8"	12
30"	DRF3000	30-3/16"	34-3/16"	2"	32-3/8"	16
34"	DRF3400	34-3/16"	38-3/16"	2"	36-3/8"	16
36"	DRF3600	36-3/16"	40-3/16"	2"	38-3/8"	24
42"	DRF4200	42-3/16"	46-3/16"	2"	44-3/8"	24
48"	DRF4800	48-3/16"	52-3/16"	2"	50-3/8"	24

### ELBOWS:

- Welded construction
- Rotating mounting flanges for easy alignment

90° Elbows (DRE)		
Part No:	Diameter:	Length:
DRE1290	12"	90
DRE1890	18"	90
DRE2490	24"	90
DRE3090	30"	90
DRE3490	34"	90
DRE3690	36"	90
DRE4290	42"	90
DRE4890	48"	90



45° Elbows (DRE)		
Part No:	Part No:	Length:
DRE1245	12"	45
DRE1845	18"	45
DRE2445	24"	45
DRE3045	30"	45
DRE3445	34"	45
DRE3645	36"	45
DRE4245	42"	45
DRE4845	48"	45



# ROUND DUCTWORK

## COOK MANUFACTURING

### SHUTTERS:

- Allows for exhausting the paint booth through an exterior wall
- Automatically closes when airflow is stopped
- Square to round adapter plate included

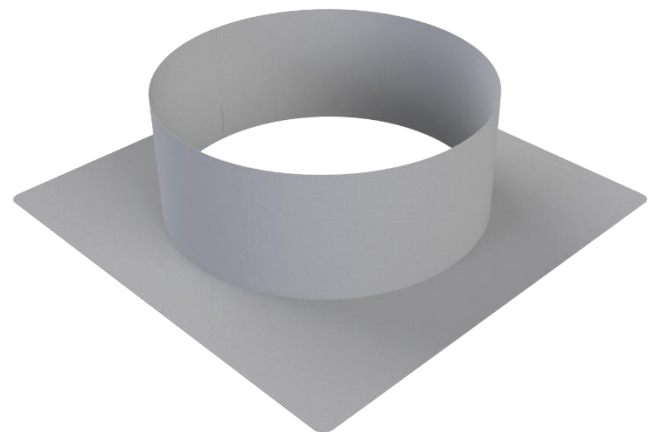
Shutters (DRS)	
Part No:	Diameter:
DRS1200	12"
DRS1800	18"
DRS2400	24"
DRS3000	30"
DRS3400	34"
DRS3600	36"
DRS4200	42"
DRS4800	48"



### ROOF CURBS:

- Storm collar included
- Specify roof pitch when ordering

Roof Curb (DRC)	
Part No:	Diameter:
DRC1200	12"
DRC1800	18"
DRC2400	24"
DRC3000	30"
DRC3400	34"
DRC3600	36"
DRC4200	42"
DRC4800	48"





# ROUND DUCTWORK

**COOK MANUFACTURING**

## AUTO DAMPERS:

- Allows for exhausting the paint booth through a roof
- Automatically closes when airflow is stopped

Auto Dampers (DRD)	
Part No:	Diameter:
DRD1200	12"
DRD1800	18"
DRD2400	24"
DRD3000	30"
DRD3400	34"
DRD3600	36"
DRD4200	42"
DRD4800	48"

